

Plasmodium – Life cycle

(Part-1)



By Dr. Shashi Prabha
HOD , Zoology Dept.
Karim City College

Semester - VI, Paper CC-14

Plasmodium –Lifecycle



Introduction

Plasmodium is a parasitic protozoa, which causes Malaria. Four species of genus plasmodium infecting the human are

- P. falciparum,
- P.vivax
- P.ovale
- P.malariae,

Of the above, P.vivax is the most common type of malarial parasite

Plasmodium –Lifecycle



Classification

Phylum	- Protozoa
Subphylum	- Sporozoa
Class	- Telospores
Order	- Eucoccida
Genus	- Plasmodium
Species	- vivax

Plasmodium –Lifecycle



Lifecycle

Plasmodium lifecycle involves two hosts-

1. Vertebrate host (Human)
2. Invertebrate host (female anopheles mosquito)

Plasmodium –Lifecycle



Lifecycle.. Contd..

Life cycle is completed in following stages

- Pre-erythrocytic cycle
- Exo-erythrocytic cycle
- Erythrocytic cycle
- Sexual cycle

Plasmodium –Lifecycle

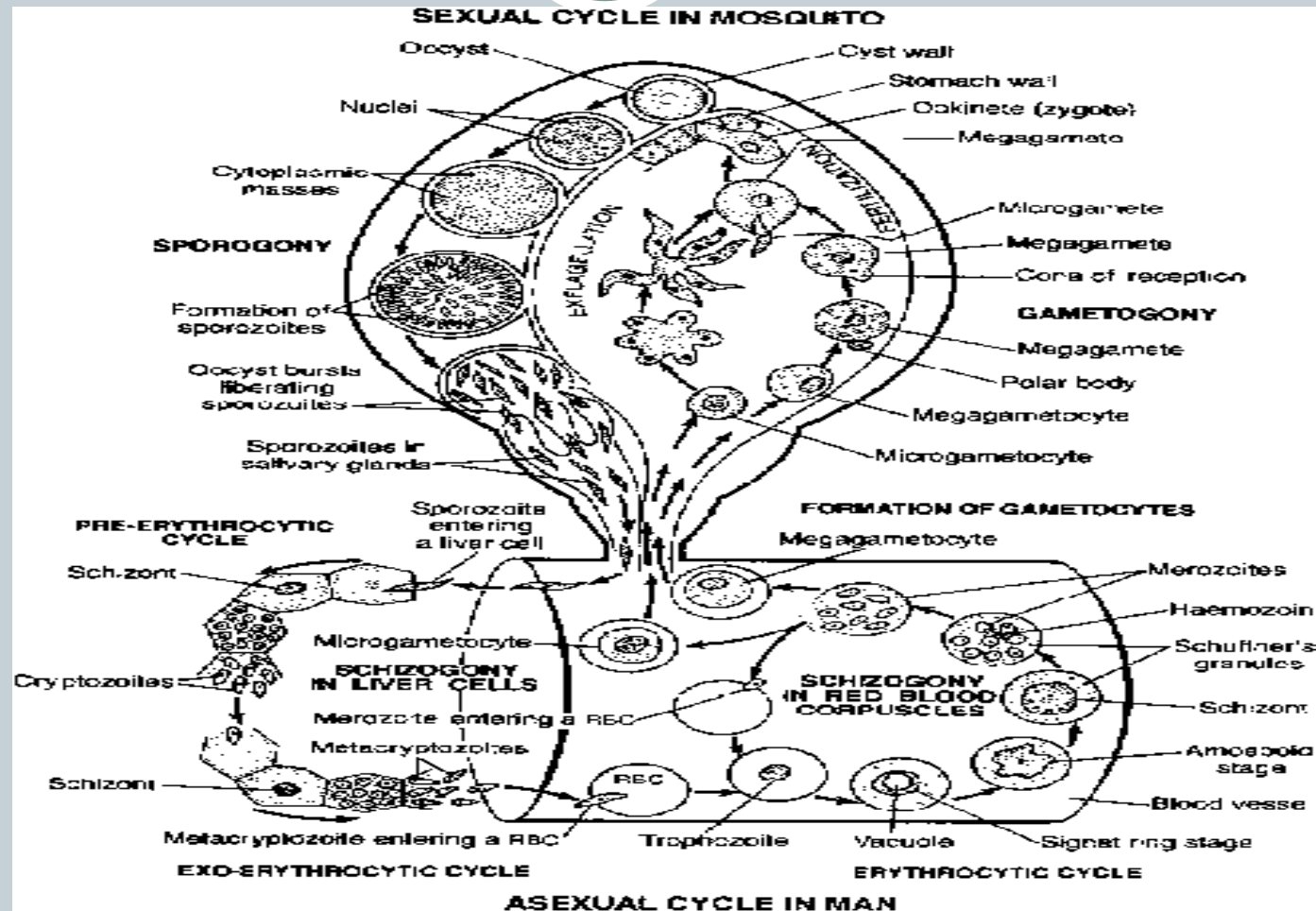


Lifecycle.. Contd..

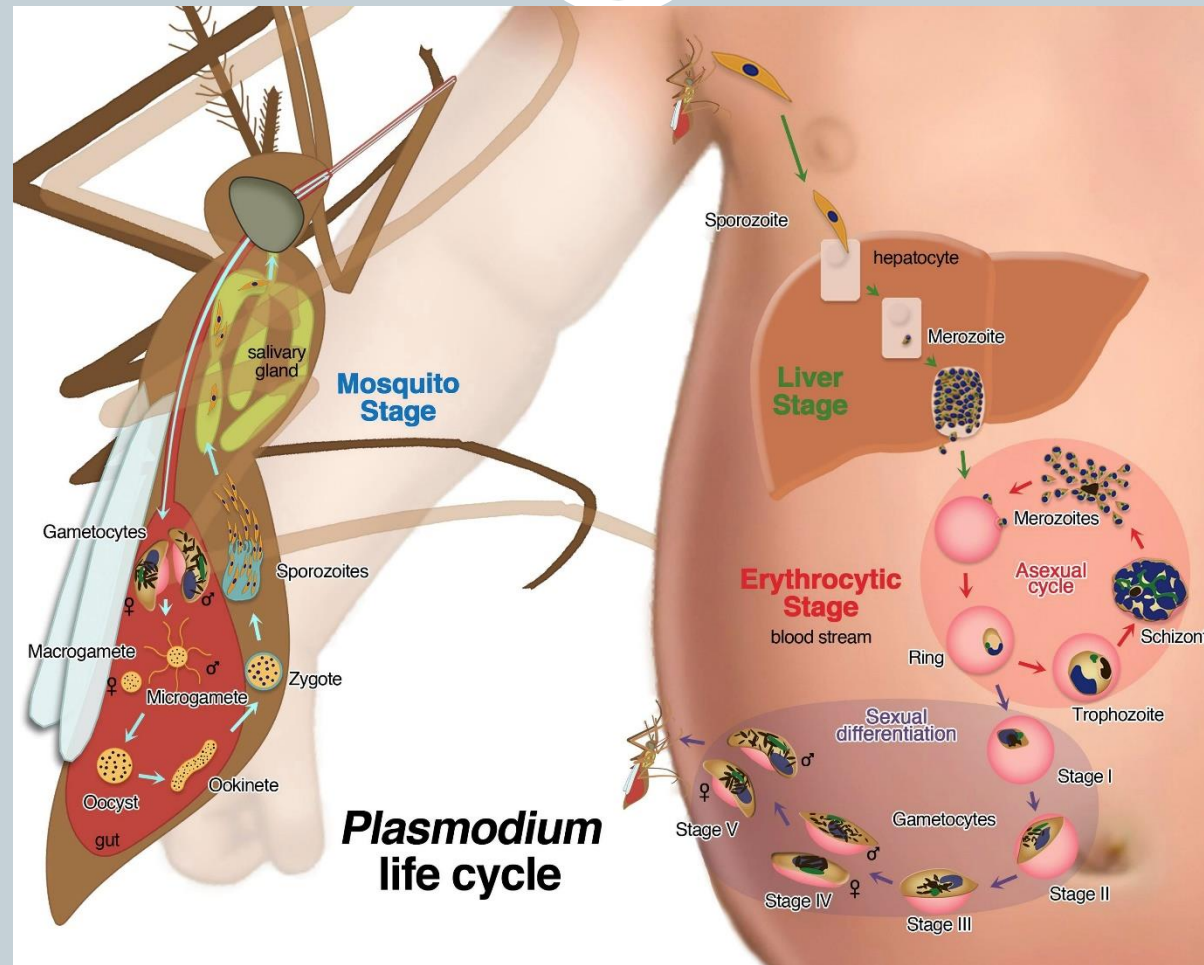
NB :

- Pre-erythrocytic cycle, Exo-erythrocytic cycle and Erythrocytic cycle are asexual phases occurring in human
- The sexual cycle occurs in female anopheles mosquito

Lifecycle of Plasmodium Vivax



Plasmodium Life Cycle



Thank You

