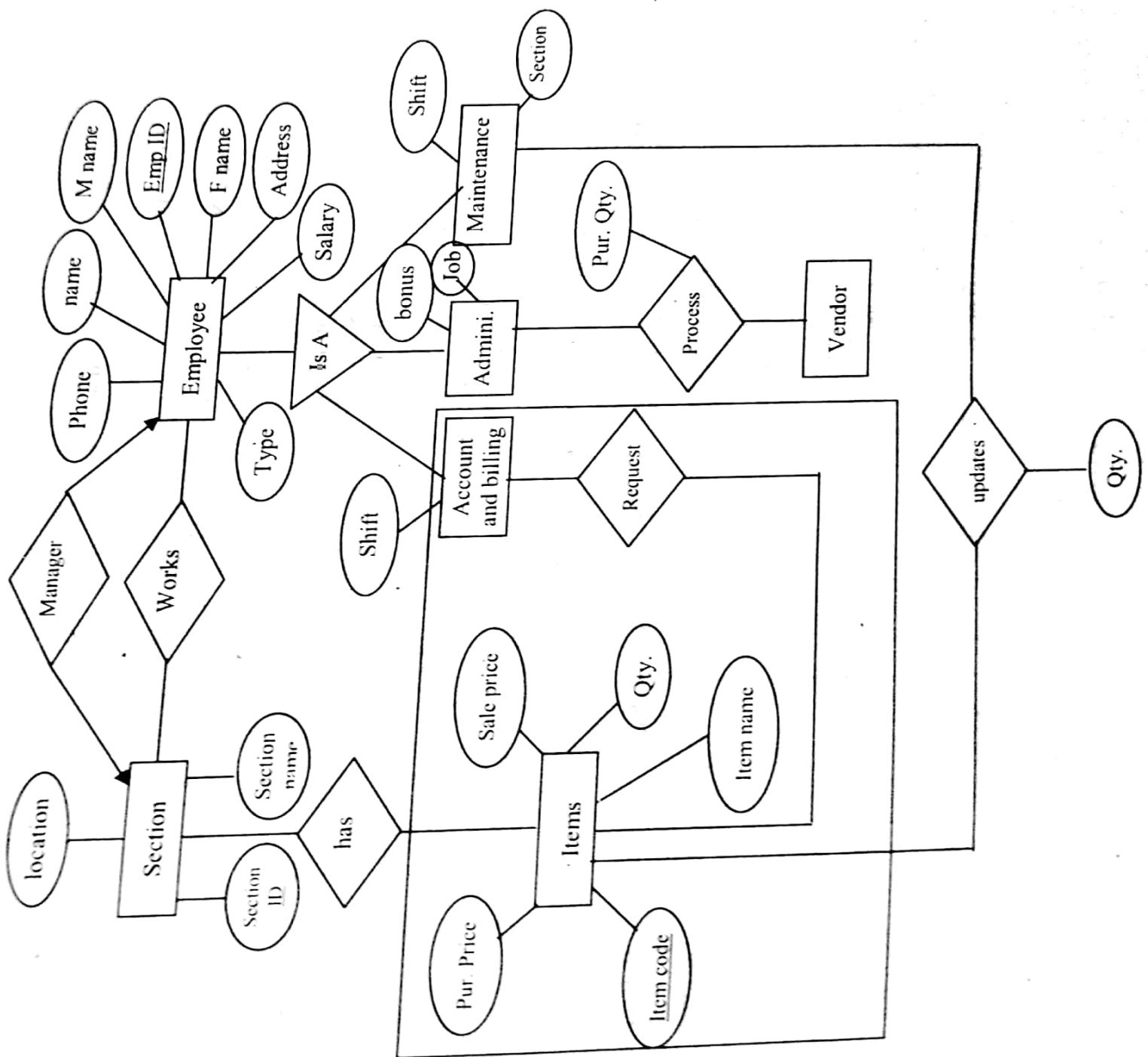
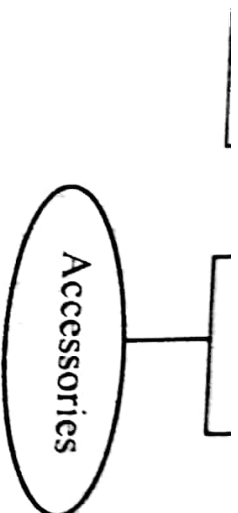


**Q.2**

**A departmental store consists of many item sections. A section is looked after by one section incharge. The store has three kinds of employees : accounts and billing; administrators; section maintainers. A request for purchase of items for the store is initiated by accounts and billing department which has the inventory details. Purchases are made by administration with proper quality checks from specified vendors. The section maintainers update the inventory placed at shelves. Draw the E-R diagram for the store specifying aggregation, generalisation or specialisation hierarchy, if any. Translate your E-R diagram to relational schema and then design the tables in 3NF.**

**Ans.**

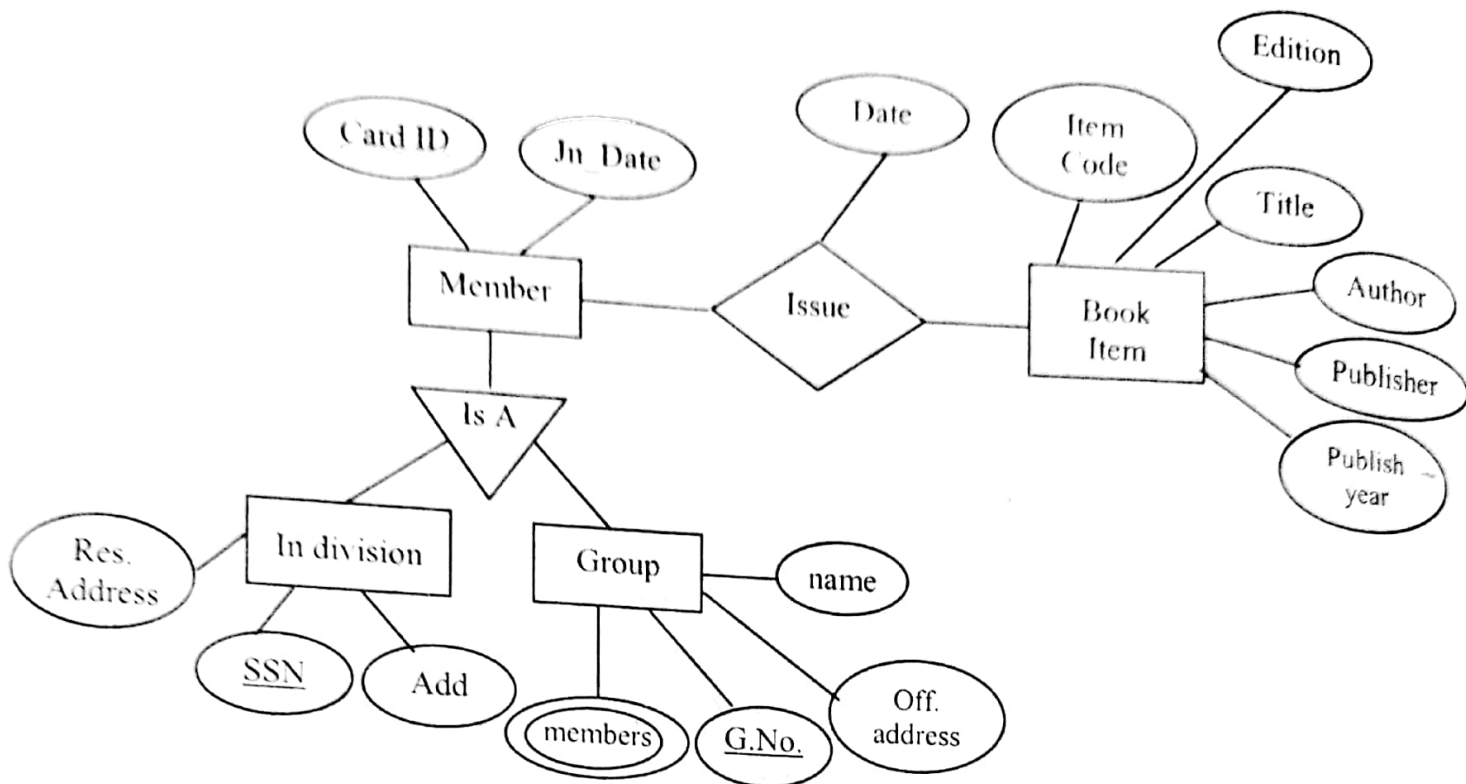




2.8

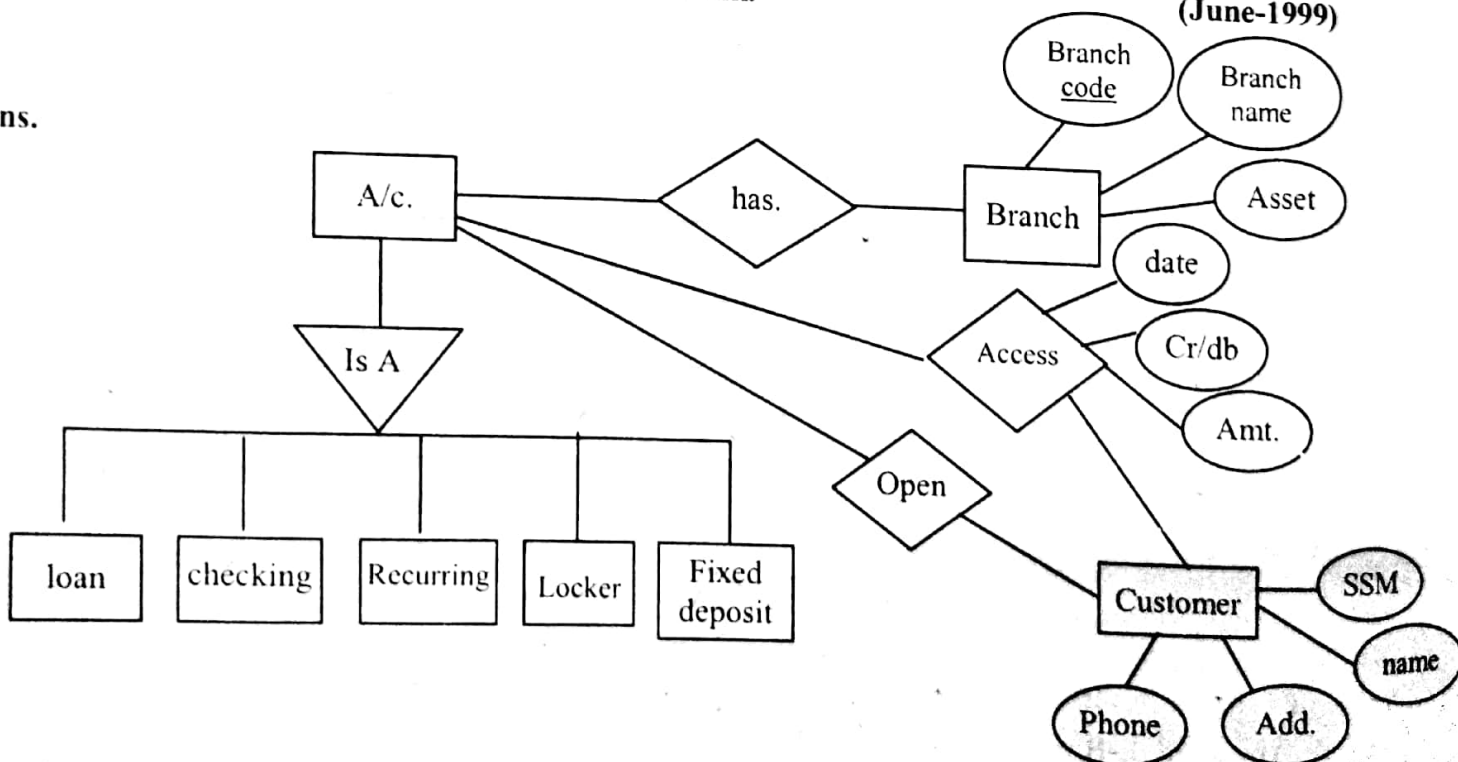
Draw the E-R diagram for a library. The library has books, reference books and journals. The books are issued to its members for 15 days while reference books only for one day and journals for a week. The membership to the library may be individuals or group (such as a university is a member).

(Dec.-1999)



**Q.9** The XYZ offers the five different types of accounts loan, checking, recurring deposits, locker account and fixed deposits. The bank has a number of branches and a client of the bank can open many accounts. Accounts can be joint and more than one client may operate an account. Draw the E-R diagram for the bank. (June-1999)

**Ans.**



**Q. 10** Draw an E-R diagram for admission process of any university. Convert this diagram to a suitable relational scheme. (June-1998)

**Ans.**

