

# **Wuchereria bancrofti-As pathogenic helminth(part-1)**



**By Dr. Shashi Prabha  
HOD , Zoology Dept.  
Karim City College**

***Semester - VI, Paper CC-14***

# Wuchereria bancrofti



1. Wuchereria bancrofti is a human parasitic roundworm
2. It has a widespread distribution throughout world except polar regions.
3. It is also known as filarial worm which causes filariasis.
4. Filarial worm is a dreaded human parasite of human blood and lymph.

# Wuchereria bancrofti



## Classification—

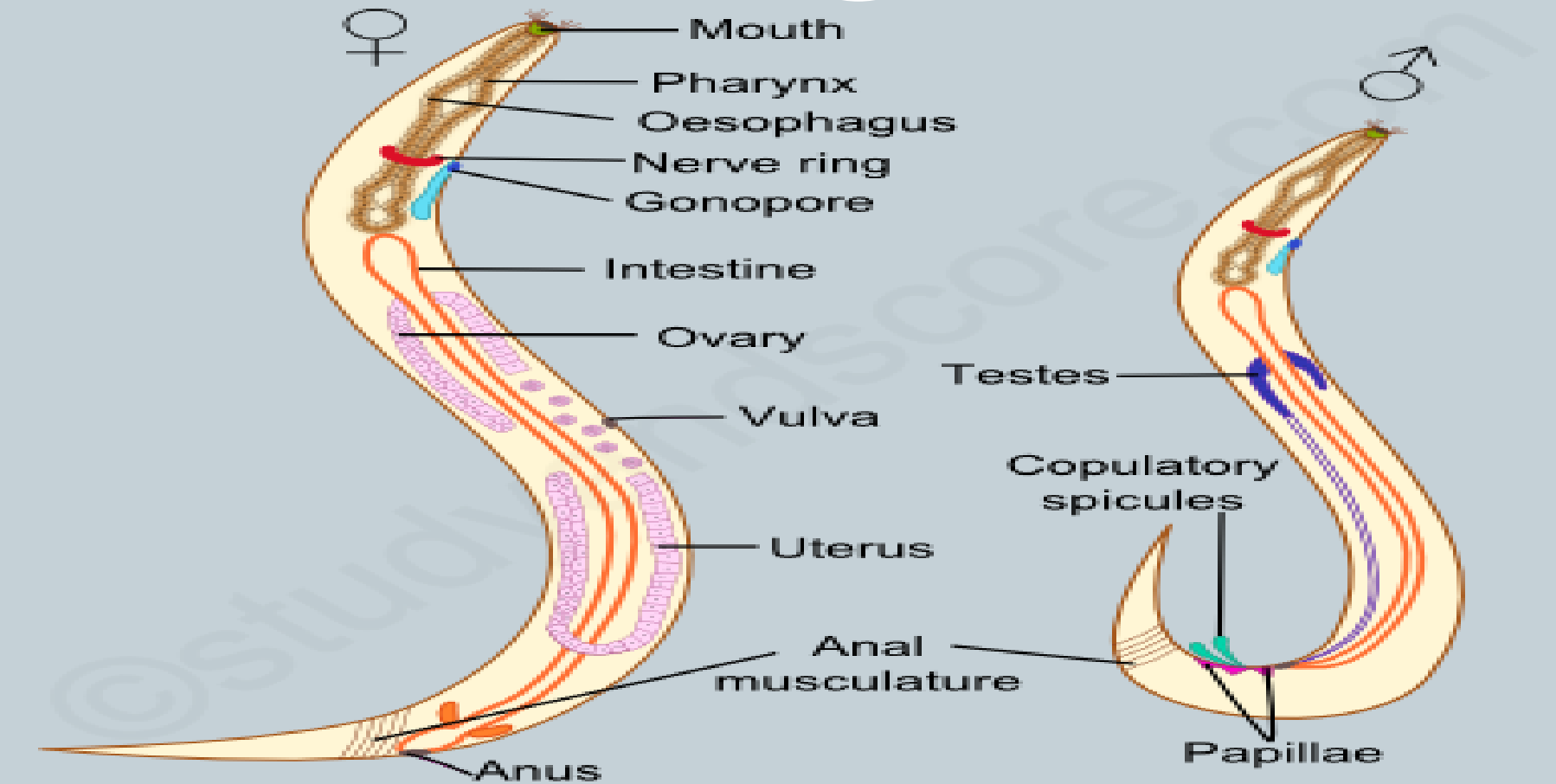
Phylum	;	Nemetoda
Class	:	Phasmida
Order	:	Filaroidea
Family	:	Filaridae
Genus	:	Wuchereria
Specise	;	bancrofti

# Wuchereria bancrofti



- Adult worm- Long hair like transparent nematode.
- Creamy white in colour.
- Filiform in shape, both ends are tapering.
- Sexes are separate and there is a distinct sexual dimorphism

# Wuchereria bancrofti



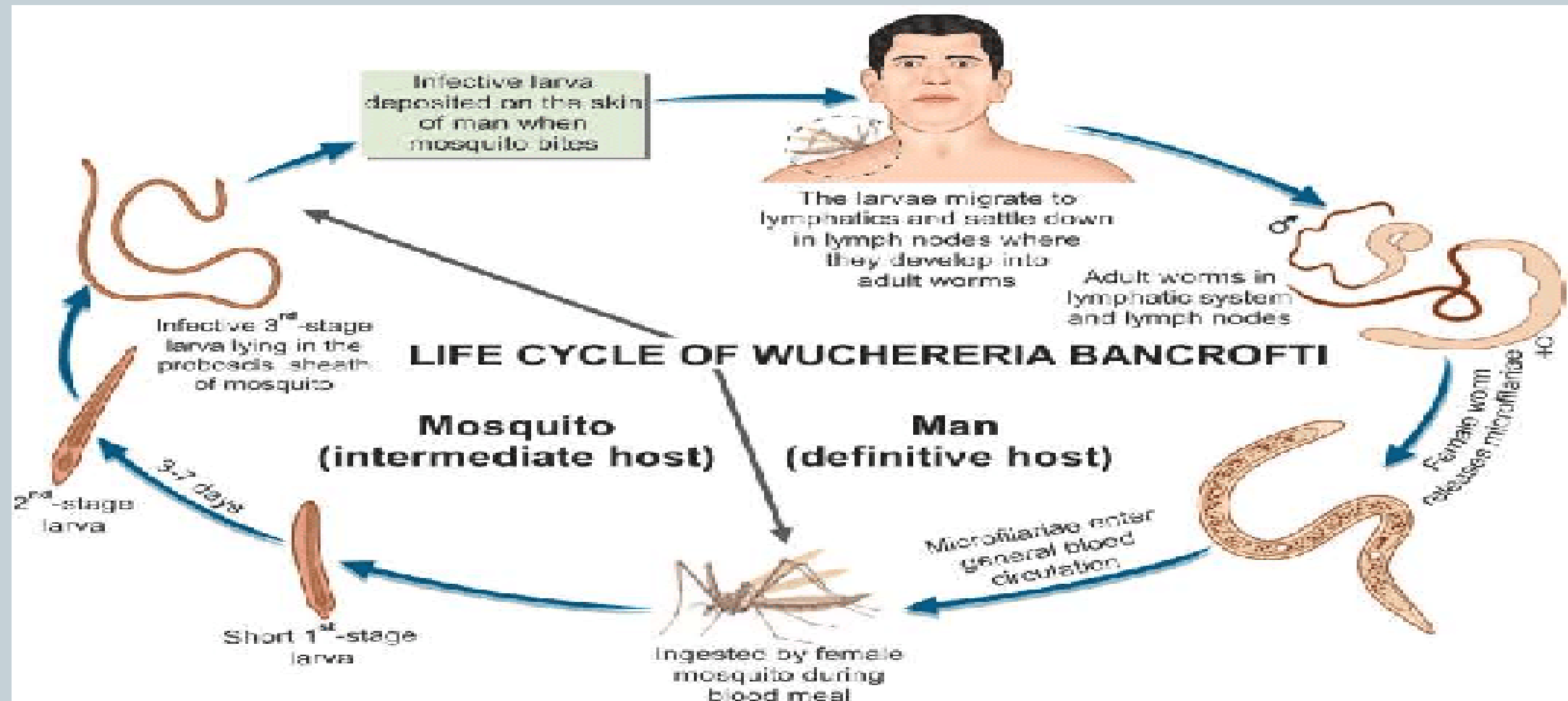
WUCHERERIA - ADULT FEMALE AND MALE

# Wuchereria bancrofti



- Life cycle -
- It is a digenetic parasite.
- It complete its life cycle in two hosts.
- Final host is man harbouring the adult worms
- Intermediate host is a blood sucking insect usually mosquito.

# Wuchereria bancrofti



*Thank You*

