

Wuchereria bancrofti-As pathogenic helminth(part-2)



**By Dr. Shashi Prabha
HOD , Zoology Dept.
Karim City College**

Semester - VI, Paper CC-14

Wuchereria bancrofti



Life cycle(cont---)

- Adult worms live coiled up in the lymph glands and lymph passages of man.
- Life cycle starts when male and female mate inside a lymphatic vessels of an infected human .
- After mating, the female releases thousands of microfilariae into the blood stream.

Microfilariae



Microfilaria



MORPHOLOGY OF STAGES

A. MICROFILARIA

The embryo itself averages 290 μm by 6-7 μm , though the sheath surrounding it is slightly larger. The cuticle of the embryo has well-marked striations and the tail tapers gradually to a rounded tip.



Wuchereria bancrofti



- In the blood of man ,by the day they live in ,large deep blood vessels ,but during the sleep they come into peripheral blood vessels in skin.
- They are sucked by mosquitoes (culex or aedes) which serves as intermediate host.
- Thus microfilariae are transferred into vector.

Wuchereria bancrofti



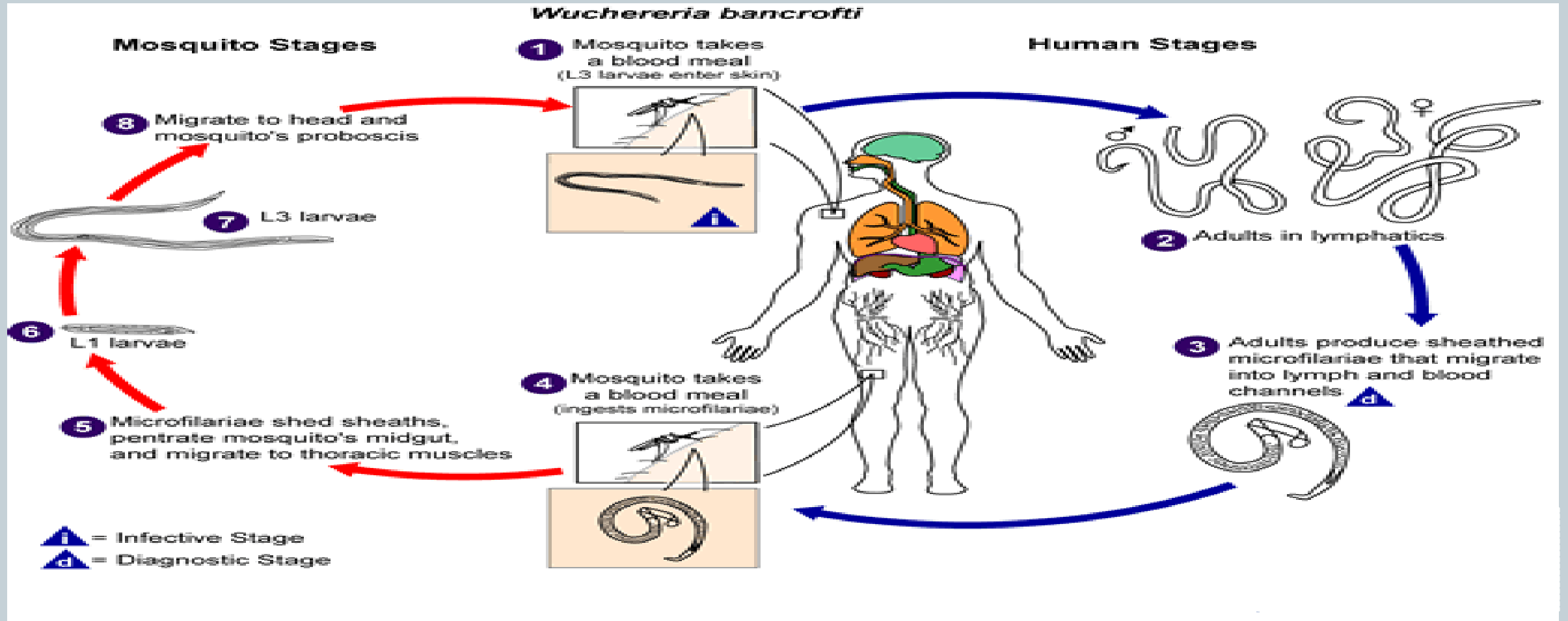
- In the stomach of mosquito microfilariae undergoes metamorphosis and finally changes into 3rd stage larvae.
- The 3rd stage larvae is infective and migrates into mosquito labium.
- Bite of this infected mosquito introduces the third stage infective larvae onto the human skin.

Wuchereria bancrofti



- They penetrate through the bite wound and enter into the blood of human host.
- In new human host they pass into lymphatics where they reside and develop into adult form.
- Adults copulate and the female produce microfilariae

Wuchereria bancrofti –life cycle



Thank You

